

The *Arc.ives*

*Caring For and Caring About
People with Developmental Disabilities and Their Families*

September, 2009

Contents

[Bowl-A-Thon a Success!](#)

[New Building for SL
VDC](#)

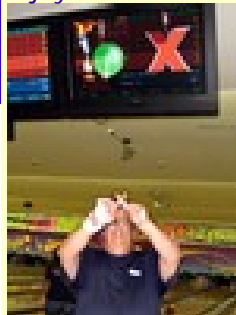
[Bowl-a-Thon August 22](#)

[Washed UP](#)

[Tee It Up](#)

[We Heard a Pin Drop - Lots of 'em!](#)

There were plenty of strikes and spares (see photo of LaTonya making the sign of the "x") as over 100 clients, staff and other stakeholders turned out for the 2009 edition of our Bowl-A-Thon on August 22nd at Cloverleaf Lanes in Fremont. Everyone rolled two games then the hungry crew adjourned to the banquet room to enjoy a catered lunch of spaghetti, garlic bread, salad and cookies.



As is the rule with the Arc, the day was marked by people going out of their way to assist one another. Pam Najera stepped up the plate to help Don Juan Pierson chalk-up a few strikes and spares. Don is a client with a visual impairment.

Then, due to a lane assignment glitch, Loretta

[See us on Facebook](#)

Quick Links

[The Arc of Alameda County](#)

[The Arc of California](#)

[Regional Center of the East Bay](#)

[The Arc of the United States](#)

[Bunjo's Comedy Club](#)

Richmond, one of our non-ambulatory clients got stuck on a lane by herself. Members of "Team Callahan" came to the rescue, however, and took turns getting Loretta lined-up and in the middle of the action! Team Callahan consisted of Amanda Callahan, Danielle Terrell, Lisa Lipton, Melissa Brandon and Yvonne Leeks.

Thanks also to the volunteers who worked the registration desk and assisted with food service. They are: Judy Vierra, Kim Vierra, Shannon Jurich, Kayla Briscoe and Pam Najera

The winning teams are listed in the left hand column.

[Become a Member](#)

Did you know that The Arc of Alameda Co. serves 307 people at its Vocational Development Centers in San Leandro , Hayward , Union City and Livermore ? And that's not counting SCOPE and our other programs. [JOIN TODAY!](#)

Laughing All the Way

Another "Arc After Dark" event comes to the Tri-Valley on Sunday, November 1, 2009. The Arc is conducting a fundraiser - Chuckles for Charity; A Night of Laughs in Support for People with Developmental Disabilities - at Bunjo's Comedy Club in Dublin.



You're invited! Plan now on buying a couple of tickets and joining us! Why not invite your friends and neighbors and make a party of it?

The 100-seat [Bunjo's Comedy Club](#) is the latest venture from comedian John DeKoven who has not only been performing but also producing comedy shows in the area for a number of years. He recently opened Bunjo's in a banquet area inside the Willow Tree Restaurant at 6513 Regional Street . (It's next to Dublin Bowl and the Outback Restaurant). Fundraisers are an important community service at Bunjo's. In our case, Mr. DeKoven will line-up four comedians to perform during our "night," we will work to sell most of the tickets and we split the revenue.

Bowl-A-Thon Winning Teams

1st Place

- DeManeul Pugh
- Dorothy Pugh
- Michael Pitpitan
- Ruth Pitpitan
- Ron Luter

The show starts at 7 p.m.

Ticket prices are \$10 for members of The Arc of Alameda County and their guests - \$20 for non-members. Order your tickets today by visiting our [web site](#) and clicking on the "Comedy Fundraiser - Tickets" button.

2nd Place

- Erica Rush
- Lori Santos
- Todd Lorenzo
- Gary Perrotti
- Bob Perrotti

During the show, you may order from a full bar and appetizer menu in Bunjo's showroom. If you would like to have dinner before the show, The Willow Tree - which features Chinese cuisine - takes reservations at 925.828.9111. DeKoven also promises a show that is not offensive but IS funny!

We'll let you know the line-up of comedians when the list becomes available. They'll be top-notch, though, so get your tickets today!

3rd Place

Dennis Ash
James Johnson
John Contrears
Keith Glasson
Steven Dominguez

Congrats to All!!!

Four Consumers Impacted by NUMMI Decision

Some 4,700 workers at the New United Motor Manufacturing Inc., (NUMMI) factory in Fremont will lose their jobs when the plant closes early next year. Hundreds more - whose employment depends on the facility - will also be pounding the pavement looking for jobs. That includes four Arc clients; Abner Ramierez, LaTonya Virgil, Aneel Mirchandani (pictured) and Luis Toledo.

On August 27th, Toyota confirmed rumors that had been going around for weeks that it will close-up shop in March of 2010. California officials have offered Toyota tax breaks and other help, including the ability to buy cheaper electricity, in an effort to keep NUMMI in town. Apparently, it wasn't enough.



Since 1995, The Arc of Alameda County has contracted with NUMMI to wash executive cars at the facility 5 days a week.

Two Arc staff people provide support to the foursome; Madeline Rodrigues and Margarita Febo.

Clients wash some 19 cars every day - sometimes as many as 23. "I like my job here," said Aneel Mirchandani, "I don't want to go back to a workshop if there is no work at NUMMI. I'll stay home."

Wanted: Golfers

The Arc is planning a Golf Fundraiser next March as part of National Developmental Disabilities Month. Mark your calendar for March 29, 2010 to play at The Castlewood Country Club in Pleasanton. Also plan on staying for the dinner and silent auction after the round. Details coming soon.

And please take a moment to respond to an upcoming "quickie survey" about golf we'll be sending out. One question is whether clients are interested in taking golf lessons.

Dear Reader,

At the Arc, we know that clients learn more and learn faster when they have opportunities to interact with their communities. We are committed - and excited to announce - that soon we will be increasing the number and the quality of the community excursions we offer the people we serve.

Project Inclusion is the fundraising campaign designed to support the effort.

Budget limitations have typically limited community interaction to visiting local parks and other inexpensive activities. Consider a small donation to help us take clients on more extended trips to

museums, or the theater. Visit [our website](#), click on the "donate" button and scroll to Project Inclusion.

Funds raised will be used for transportation costs such as gasoline, purchasing tickets to events and providing clients with opportunities to get a bite to eat in something other than a fast food outlet.

Inclusion isn't all recreational opportunities either. If you know of any part time jobs or volunteer opportunities for which our people might be qualified, please contact me.

Thanks,

Richard Fitzmaurice
The Arc of Alameda County

rfitzmaurice@arcamedia.org

510.357.3727 x 2107

[Back to Top](#)